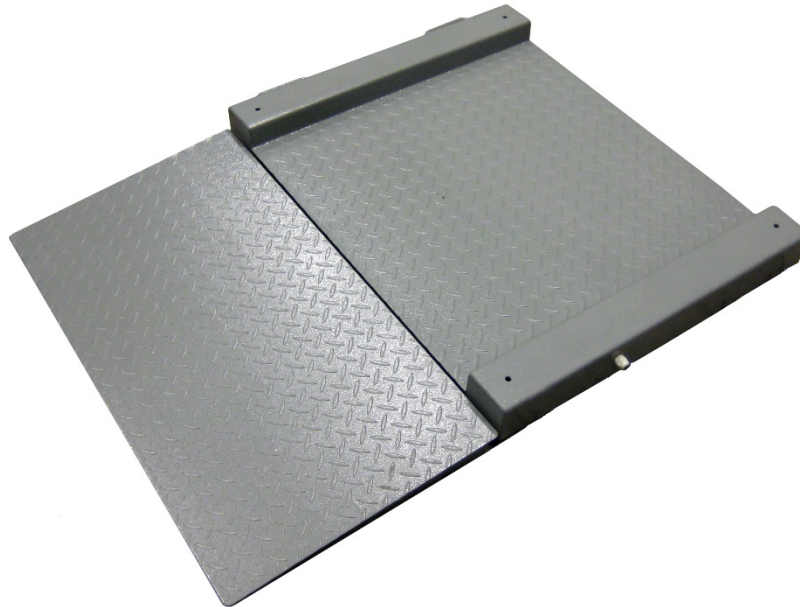


Drive through platform LWC-GSP

OIML type approved drive through platform in powder coated and robust steel construction. Different platforms sizes and capacity. To be combined with different types of instruments and transmitters.



- ✓ For weighing objects on trolley, fork-lift or similar
- ✓ Mild steel, powder coated.
- ✓ Designed with 4 x steel C3 load cells (350 ohm) with minimum IP-67 protection
- ✓ L/Cs mounted to always give correct measuring, independent on pallet/object positioning
- ✓ EU verification according to OIML class III are available on request.
- ✓ One ramp included, extra ramp as option
- ✓ Flexible/tilt able feet. Height adjustable from above.
- ✓ Lifting handles

LWC-GSP Specifications:

Sizes:	Length	Width	Height	Weight:	Capacity, max:
750 x 750 mm	750 mm	750 mm	50mm	kg	600 kg
1000 x 1400 mm	1000 mm	1400 mm	50 mm	kg	1500 kg
Sizes above are weighing area. External size is 200 mm wider, excluding handles.					
Other dimensions and capacities on request.					
One ramp included, extra ramp as option					